



Interface panel meter 6-digit

PB6

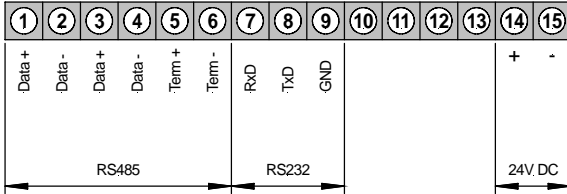
- red display with 6 digit character string
- RS232 or RS485 switchable
- adjustable baudrate 300-57 kbit/s
- protocol free adjustable
- adjustable address compilation
- adjustable Start-/Stop-sign
- adjustable readout range in protocol
- adjustable number compilation
- option: BCD address-coded with different character sets
- protection class IP54

Interface panel meter

- RS232/RS485
- BCD (address codified)



• RS232/RS485



Power supply 24 VDC
(galvanic insulated)

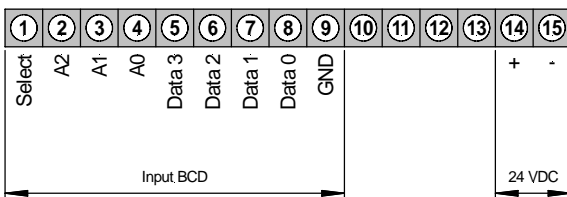
ORDER NUMBER
(without options)

EUR

PB 6.A000.3730B

270,00

• BCD (address codified)



Power supply 24 VDC
(galvanic Insulated)

PB 6.B000.3530B

270,00

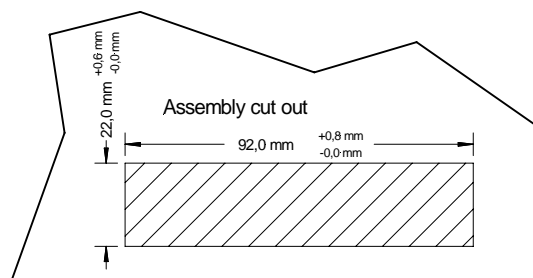
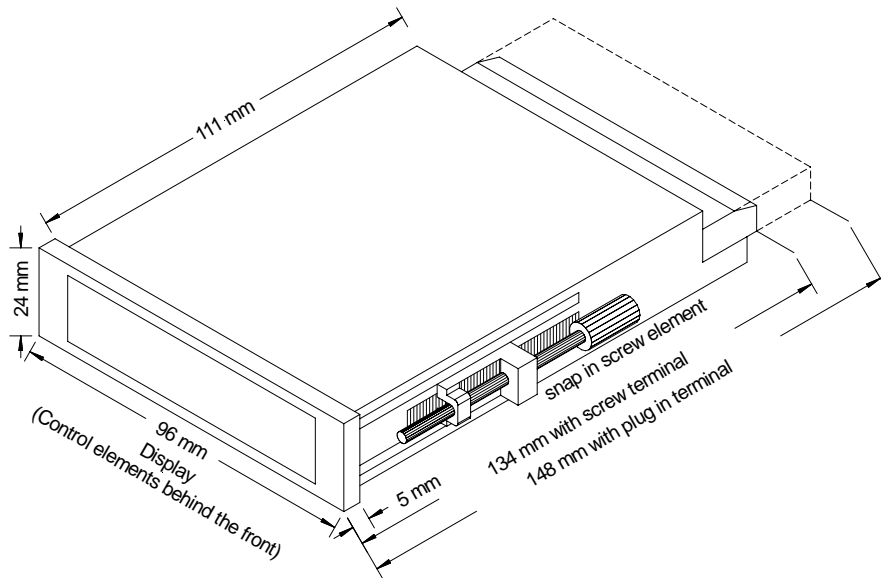
OPTIONS

	PB6...	Additional price
		EUR
Green LED on demand	X	
Plug in terminal	X	14,30
Protection IP65 on demand	X	
Other power supplies on demand		

Technical data

Housing	Dimensions	96 x 24 x 134 mm (WxHxD) including screw terminal 96 x 24 x 148 mm (WxHxD) including plug-in terminal
	Assembly cut out	92.0 ^{+0.8} x 22.0 ^{+0.6} mm
	Fastening	snap in screw element
	Thickness/wall	0-50 mm
	Housing material	PC/ABS-plastic blend, colour black, UL94V-0
	Protection	standard IP40 (front), IP00 (rear side)
	Weight	approx. 0.250 kg
Indication	Connection	screw- /plug in-terminal; wire cross-section up to 2.5 mm ²
	Size of digits	14 mm
	Colour of segments	red
	Indication	4 digits
Interface	Protocol	parametricable ASCII-report
	Baud rates	300, 1.200, 2.400, 4.800, 9.600, 19.200, 38.400, 57.600
	Interfaces	RS232 / RS485 parametricable
	Length/conductor RS232	max. 3 m
	Length/conductor RS485	max. 1.000 m
	Bus-participants	32
	Term schedule	to get activated via connection terminal
Interface BCD	HIGH / LOW	≥ 4.5 V / < 4 V
Supply unit	Power supply	24 VDC / +/-10 %
	Power consumption	max. 5 VA

Memory		parameter memory EEPROM
	Data life	>30 years
Ambient conditions	Working temperature	0 up to + 60 °C
	Storing temperature	-20 up to + 80 °C
	Climatic resistance	rel. humidity ≤75% in the average / year without dew
EMV CE-sign		DIN 61326 conformity according to 89/336/EWG
Safety standard		DIN 61010
Housing		



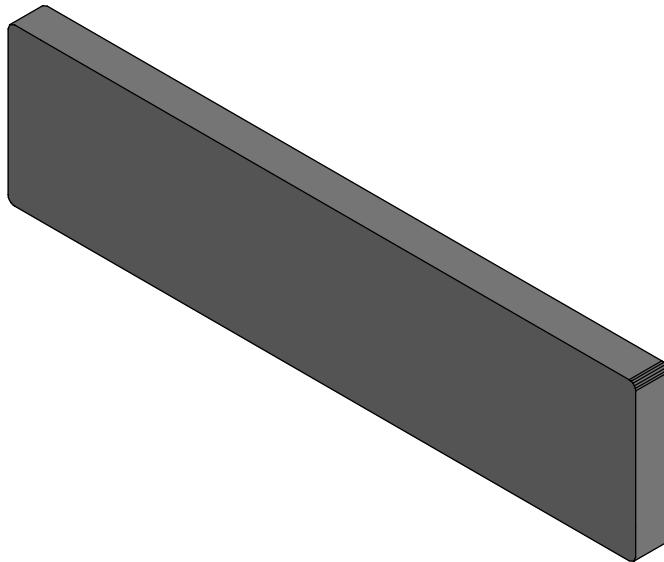
Ordering code PB6

Digital panel meter with microprocessor

P B 6 A 0 0 0 3 7 3 0 B

Basic model (processor panel meter)												Internal index
Basic model Binary input	B											0 Internal index
Number of digits 6 digits	6											Mechanical options
												3 Operation behind front, IP54, screw terminal
												5 Operation behind front, IP54, plug-in terminal
Interface RS232/RS485 galv. insulated BCD	A B											Power supply
												7 24 VDC (galvanic insulated)
Sensor supply no sensor supply	0											Housing
												3 96x24
Analog output no analog output	0											0 Internal index

Blind covers with fastening clamps



GH022-07

7,90