



Interface panel meter 6-digit

PB6

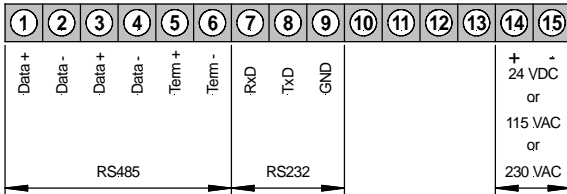
- red display with 6 digit character string
- RS232 or RS485 switchable
- adjustable baudrate 300-57 kbit/s
- protocol free adjustable
- adjustable address compilation
- adjustable Start-/Stop-sign
- adjustable readout range in protocol
- adjustable number compilation
- option: BCD address-coded with different character sets
- protection class IP54

Interface panel meter

- RS232/RS485
- BCD (address codified)



• RS232/RS485



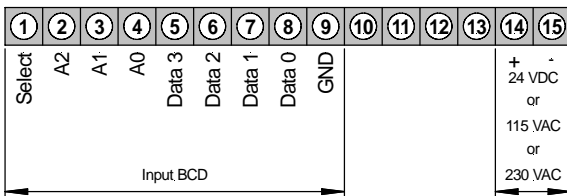
Power supply 230 VAC
 Power supply 115 VAC
 Power supply 24 VDC
 (galvanic insulated)

ORDER NUMBER
 (without options)

EUR

PB 6.A000.1540B 240,00
PB 6.A000.1440B 260,00
PB 6.A000.1740B 280,00

• BCD (address codified)



Power supply 230 VAC
 Power supply 115 VAC
 Power supply 24 VDC
 (galvanic insulated)

PB 6.B000.1540B 240,00
PB 6.B000.1440B 260,00
PB 6.B000.1740B 280,00

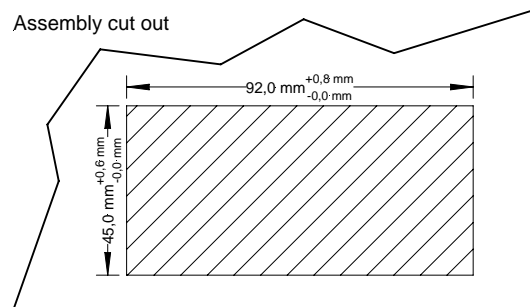
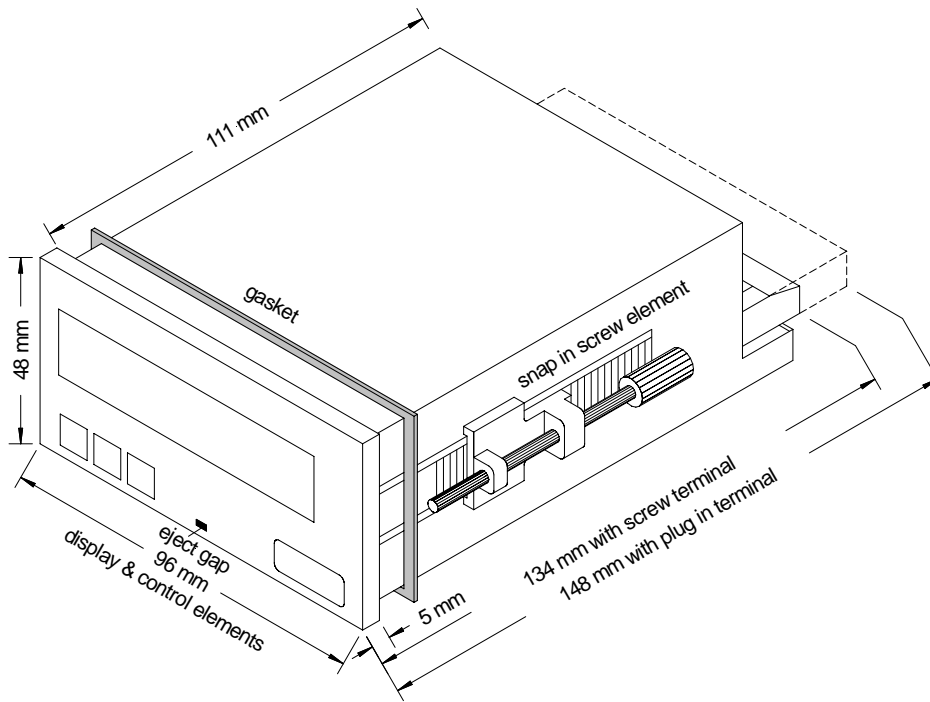
OPTIONS

	Additional price	
	PB6...	EUR
Green LED on demand	X	
Protection IP65	X	10,25
Plug-in terminal	X	14,30
Other power supplies on demand!		
Dimension strip selectable		

Technical data

Housing	Dimensions	96 x 48 x 134 mm (WxHxD) including screw terminal 96 x 48 x 148 mm (WxHxD) including plug-in terminal
	Assembly cut out	92.0 ^{+0.8} x 45.0 ^{+0.6} mm
	Fastening	snap in screw element
	Thickness/wall	0-50 mm
	Housing material	PC/ABS-plastic blend, colour black, UL94V-0
	Protection	standard IP54 (front), IP00 (rear side)
	Weight	approx. 0.390 kg
	Connection	screw- /plug in-terminal; wire cross-section up to 2.5 mm ²
Indication	Size of digits	14 mm
	Colour of segments	red
	Indication	4 digits
Interface	Protocol	parametricable ASCII-report
	Baud rates	300, 1.200, 2.400, 4.800, 9.600, 19.200, 38.400, 57.600
	Interfaces	RS232 / RS485 adjustable
	Length/conductor RS232	max. 3 m
	Length/conductor RS485	max. 1.000 m
	Bus-participants	32
Term schedule	to get activated via connection terminal	

Interface BCD	HIGH / LOW	$\geq 4.5 \text{ V} / < 4 \text{ V}$
Power unit	Power supply	230 VAC / 50/60 Hz / +/-10 % 115 VAC / 50/60 Hz / +/-10 % 24 VDC / +/-10 %
	Power consumption	max. 5 VA
Memory		parameter memory EEPROM
	Data life	>30 years
Ambient conditions	Working temperature	0 up to + 60 °C
	Storing temperature	-20 up to + 80 °C
	Climatic resistance	rel. humidity $\leq 75\%$ in the average / year without dew
EMV CE-sign		DIN 61326
		conformity according to 89/336/EWG
Safety standard		DIN 61010
Housing		



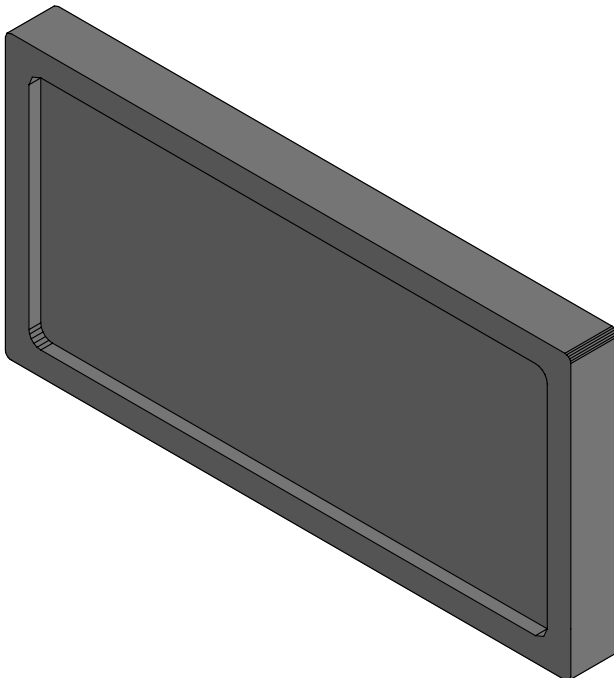
Ordering code PB6

Digital panel meter with microprocessor

P B 6 A 0 0 0 1 7 4 0 B

Basic model (processor panel meter)			Internal index
Basic model Binary input	<input type="text" value="B"/>		<input type="text" value="0"/> Internal index
Number of digits 6 digits	<input type="text" value="6"/>		
Interface RS232/RS485 galv. insulated BCD	<input type="text" value="A"/> <input type="text" value="B"/>		Mechanical options
Sensor supply no sensor supply	<input type="text" value="0"/>		<input type="text" value="1"/> Foil keyboard, IP65, screw terminal <input type="text" value="4"/> Foil keyboard, IP54, screw terminal <input type="text" value="7"/> Foil keyboard, IP65, plug-in terminal <input type="text" value="9"/> Foil keyboard, IP54, plug-in terminal
Analog output no analog output	<input type="text" value="0"/>		Power supply
			<input type="text" value="4"/> 115 VAC <input type="text" value="5"/> 230 VAC <input type="text" value="7"/> 24 VDC (galvanic insulated)
			Housing
			<input type="text" value="1"/> 96x48
			<input type="text" value="0"/> Internal index

Blind covers with fastening clamps



GH009-06

7,90